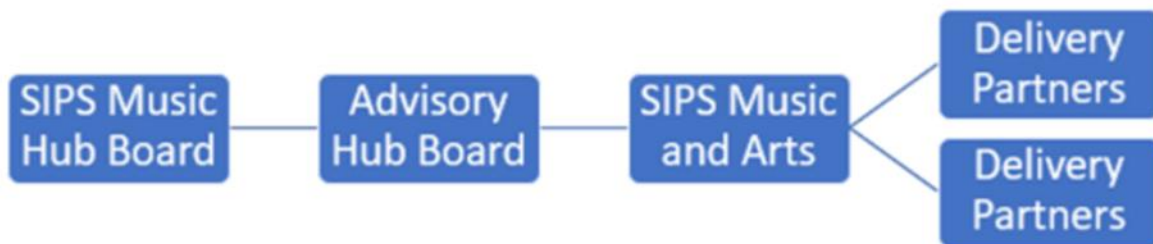


Governance & Strategic Partners

Sandwell Music Education Hub – Governance Overview



SIPS HUB BOARD

| Name | Position | |
|-----------------|--|------------|
| Chris Ward | Retired Director of Education Sandwell MBC | |
| Andy Timmins | Assistant Director of Education Sandwell MBC | |
| Peter Lee | Head Teacher at Q3 Academy Langley | |
| Phillip Butcher | Head Teacher at The Priory Primary School | |
| Liz Hart | Head Teacher at Brandhall Primary School | |
| Brian Cape | SIPS CEO | Non-Voting |
| Kim Whiting | SIPS Strategic Director- People & Policy | Non-Voting |
| Craig Felton | SIPS Strategic Director – Finance | Non-Voting |
| Tanya Derham | Head of service | Non-Voting |

The Hub Governing Board will:

- *ensure that Arts Council England requirements are met*
- *endorse and oversee the vision*
- *ensure that the work of the Hub is enterprising, inspiring and leading to positive musical outcomes for young people*
- *ensure that activities and interventions are fully effective*
- *call the Hub to account for:*
 - *Target setting, progress and outcomes for children and young people, including all minority groups*
 - *Business management, use of resources, budgeting and Value for Money*
 - *Fair and transparent decisions*
 - *To receive, discuss and analyse reports on all the above issues, giving appropriate challenge, advice, support and encouragement*

The Governing Group will meet four times per year and the agenda will include: scrutiny of the business plan, financial performance etc.

| Name | Role | Expertise |
|----------------------|---|--------------------------------|
| Andy Timmins (Chair) | Assistant Director of Education Sandwell MBC | Sandwell Schools. Education |
| Tanya Derham | Head Of service | Music service |
| Robert Hayward | Deputy Head of service | Ensembles |
| Lee Fisher | Access to Music | 16- 18 Music provision |
| Jenny Lloyd | Parent- P/T music teacher | Parent |
| Holly Radford | MAC Producer | EDI |
| Sarah Marshall | Peoples Orchestra CEO | Community Musicians |
| Tom Spurgin | CBSO Education Lead | NPO representative |
| Jerrel Jackson | Creative academies CEO | Alternative Music /Arts |
| Sharon Bayley Kitts | Primary Lead | Primary schools |
| Aiden Pepper | Secondary Lead | Secondary schools |

The Advisory Hub Board

The purpose of the Advisory Hub Board shall be to formulate the vision of music delivery of the Hub, to bring expertise, to represent the views of all stakeholders and to reflect local needs in order to ensure the most appropriate delivery of the core and extension roles of the Hub

The Advisory Group will delegate the specific organisation, development, and delivery of Hub activities to:

- Sandwell Music and Arts Service, the Lead Partner for Sandwell Music Education Hub
- Working and Reference Groups with a range of school, professional and voluntary representatives to develop detailed strategies for specialist areas being covered by Hub activities

The Music Advisory Board will meet four times per year and the agenda will include: scrutiny of the business plan, financial performance etc



Partnerships



Supporting cultural education, endorsed by Arts Council England



New for 2022/23

Supportive partners:

The spirit of the hub has partnership working at its core and there is a growing network of partners who work with the hub to deliver or commission activity.

Our ongoing challenge is to shape and manage the quality of outputs within these many partnerships. They encompass a range of local, regional and national partners.

They are almost exclusively 'music education' partners. Our scope within the Cultural Education Partnership will undoubtedly seek to work with a broader range of multi art form partners

| | | Location | Function in the hub | Hub roles | Financial relationship |
|---------------------------|--------------------------------|------------------------------|---|------------------|--|
| Lead partner | SIPS Education | Guardian House West Bromwich | Governance /Function | | n/a |
| Strategic partners | | | | | |
| | MAC Makes Music * | MAC Birmingham | EDI – Inclusion | CR2 | Youth Music |
| | West Midlands Music Services * | West Midlands | Advisory | CR 1-4 ER 1-3 | |
| | Peoples Orchestra | West Bromwich/Sandwell | Advisory 18-25 year olds | CR2 /ER3 | Collection of Music Centre Membership Box Office |
| | Leicester Music Service * | Leicestershire | Music Technology | CR1 | |
| | CBSO † | Birmingham | Progression Routes/Live music experiences | CR2 ER 3 | |
| | National Open Youth Orchestra | Birmingham /MAC | Progression Routes | CR2 ER 3 | |
| | National Youth Orchestra | London | Progression Routes | CR2 ER 3 | |
| Delivery partners | | | | | |
| | Big Top Music* | Birmingham | SEND | Cr1, 2 3 ER3 | |
| | MusicShare* | Lichfield | Vocal Support | CR4 ER1,3 | |
| | SoundAbout * | National | Vocal for SEND | CR1,4 ER 3 | |
| | Welsh National Opera * | | Vocal | CR4 ER3 | |
| | Stringcredibles* | Birmingham | String Quartets | CR2,3 ER1,3 | |
| Schools | Sandwell Virtual School * | Sandwell | Children in care | CR2,3 ER1,2,3 | VS £90,000 supporting CIC instrumental tuition from Y4-7 |
| | Ryders Green primary School * | Sandwell | Community Partnership | Ext 3 | |